

This is a collection of pictures for Holy week not all pictures may be appropriate for younger ages. As a kid we had pictures of the Crucifixion and though noting about it. The rest of the pictures are for all ages.

Some pictures are real for the present while other are paintings or drawing.

There is no particular order to the pictures, just mostly the order they were added.



Crucifixion



Jesus being raised on the cross



Jesus praying in Gethsemane



Jesus praying in Gethsemane



A rock-cut tomb, with a rolling stone door.



Michelangelo's Pietà, showing Mary mourning over Jesus,



A rock-cut tomb, with a rolling stone door.





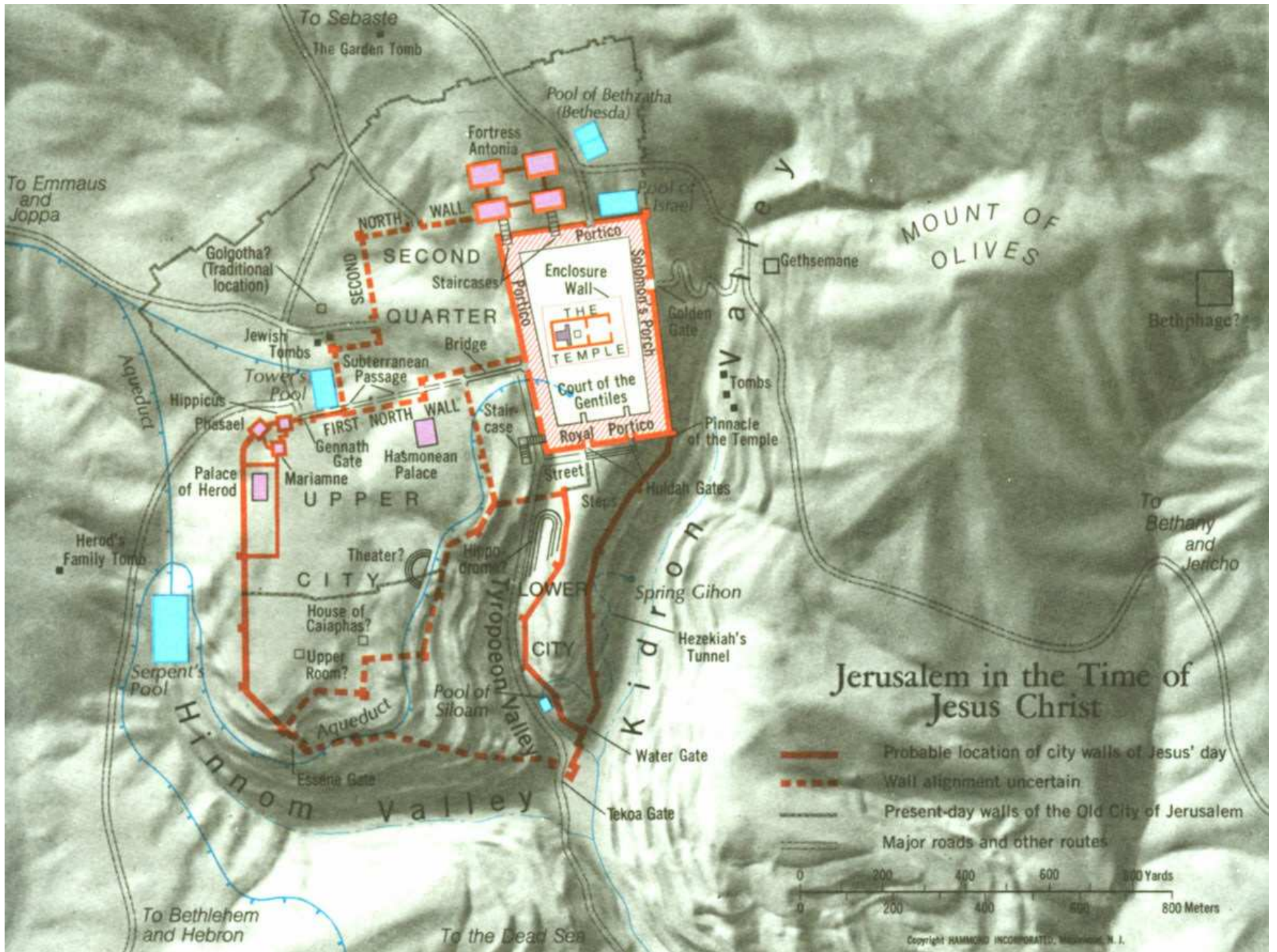
A hoard of Tyrian silver shekels which were used in the Temple Tax.



Olive trees in the Garden of Gethsemane on the Mount of Olives.



Caravaggio's painting of Thomas inspecting the wounds of Christ.



To Sebaste

The Garden Tomb

Pool of Bethzatha (Bethesda)

Fortress Antonia

Pool of Israel

To Emmaus and Joppa

Golgotha? (Traditional location)

SECOND NORTH WALL

SECOND QUARTER

Staircases

Portico

Enclosure Wall

THE TEMPLE

Court of the Gentiles

Royal Portico

Solomon's Porch

Golden Gate

MOUNT OF OLIVES

Gethsemane

Bethphage?

Jewish Tombs

Tower's Pool

Hippicus

Phasael

Palace of Herod

Mariamne

UPPER CITY

Gennath Gate

Hasmonean Palace

Subterranean Passage

Bridge

FIRST NORTH WALL

Staircase

Street

Steps

Huldah Gates

Pinnacle of the Temple

Herod's Family Tomb

Serpent's Pool

THEATER

House of Caiaphas?

Upper Room?

LOWER CITY

Pool of Siloam

Aqueduct

Esstine Gate

Spring Gihon

Hezekiah's Tunnel

To Bethany and Jericho

Water Gate

Tekoa Gate

To Bethlehem and Hebron

To the Dead Sea

Copyright HAMMOND INCORPORATED, Mahwah, N. J.



Last day for Jesus from the Upper Room to the cross.





Garden of Gethsemane on the Mount of Olives.





*Gordon's Calvary, one of two sites considered to be the possible location of Jesus' crucifixion.*



*A drawing of the Temple Mount in Jerusalem as it would have appeared in Jesus' day. In the left center of the picture is the Western Wall, lying between Wilson's Arch at its north end and Robinson's Arch (with the stairway, at the corner of the wall) at its south end. To the right, on the south wall, is the Huldah Gate with its stairs, which remain today.*





*The model of first-century Jerusalem showing the three towers (Hippicus, Phasael, and Mariamne) built by Herod to protect his palace. The bottom portion of one (probably Phasael) still stands by Jaffa Gate today.*



*Palm Sunday*





*Palm Sunday*